

GODREJ NEST

SECTOR 150, NOIDA

Tower A1: Unit 1 & 4

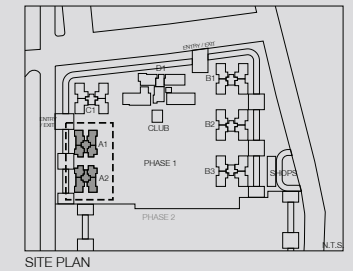
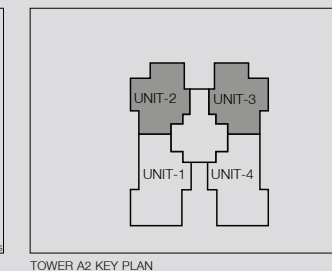
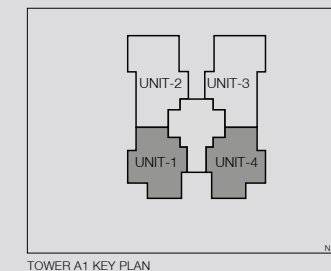
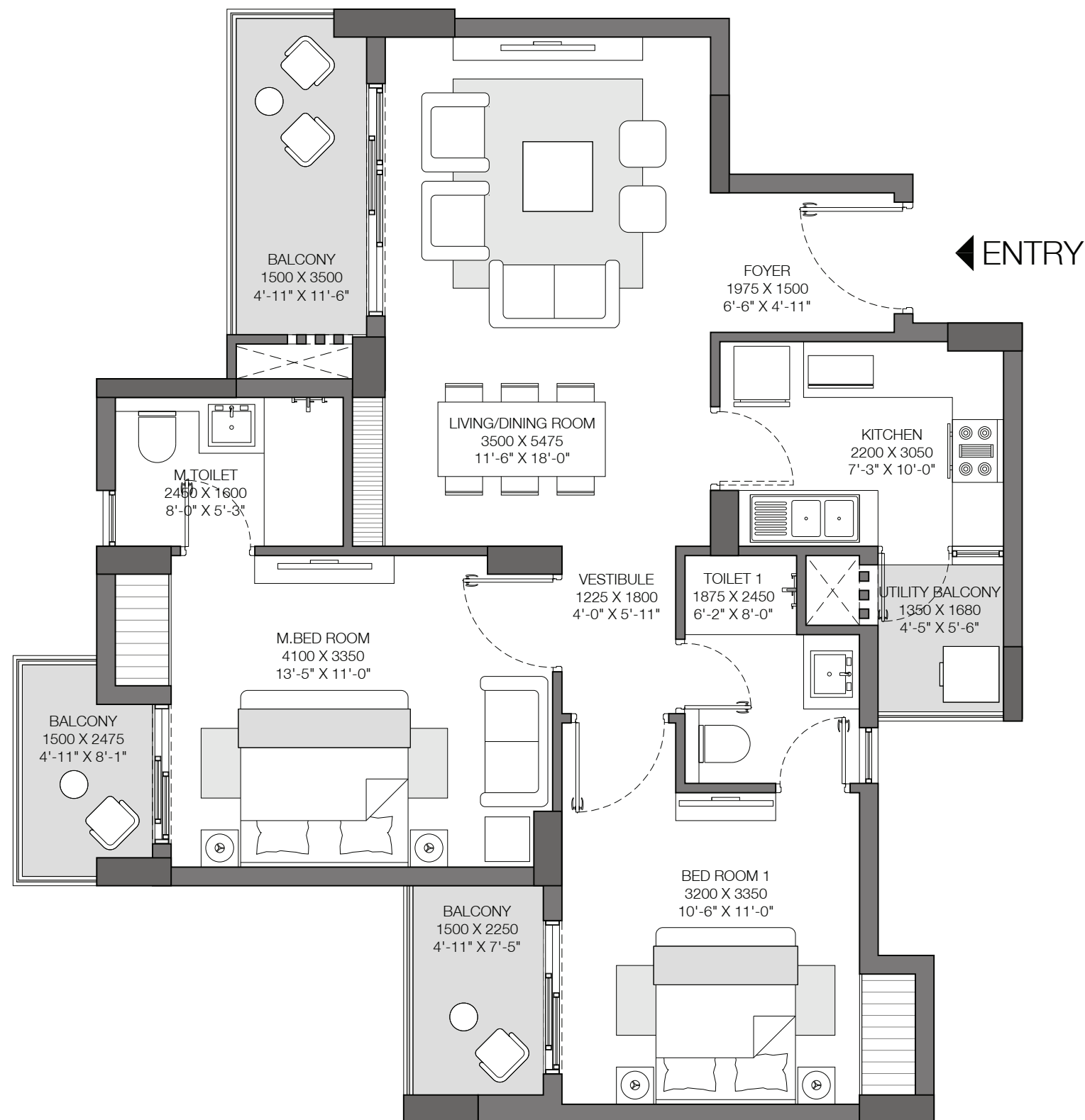
Towe A2: Unit 2 & 3

2 BHK

Unit Carpet Area: 69 SQ.M.

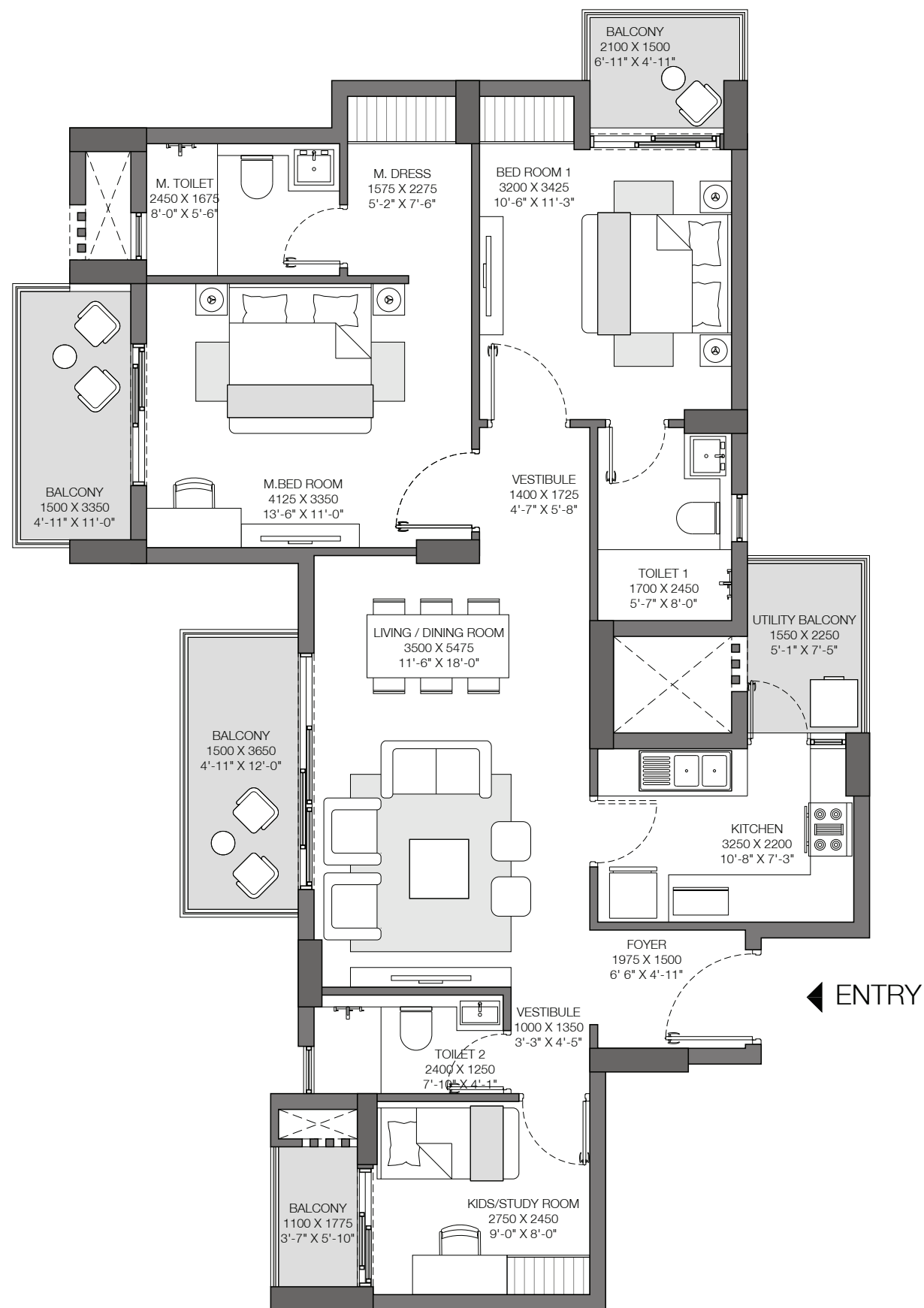
Exclusive Area: 14 SQ.M.

Total Area: 83 SQ.M.



This is not an offer, an invitation to offer and/or commitment of any nature. This contains artistic impressions and no warranty is expressly or impliedly given that the completed development will comply in any degree with such artist's impression as depicted. The furniture, accessories, paintings, items, electronic goods, additional fittings/fixtures, decorative items, false ceiling including finishing materials, specifications, shades, sizes and colour of the tiles, etc. shown in the image are only indicative in nature and are only for the purpose of illustrating/indicating a conceived layout and do not form part of the standard specifications/amenities/services to be provided in the unit. All specifications of the unit shall be as per the final agreement between the Parties.

The present project is being developed by Brick Rise Developers Pvt. Ltd. (A subsidiary of Lotus Greens Constructions Pvt. Ltd.) who has appointed Godrej Properties Limited as the Development Manager for the same. IndusInd Bank Ltd. has sanctioned the construction finance for the present Project. The RERA registration number for this project is: GODREJ NEST Phase 1 UPRERAPRJ13521 on website- <http://up-rera.in>



GODREJ NEST

SECTOR 150, NOIDA

Tower A1: Unit 2 & 3

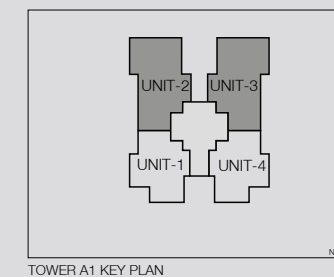
Towe A2: Unit 1 & 4

3 RHK

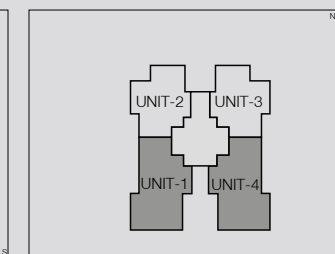
Unit Carpet Area: 83 SQ.M.

Exclusive Area: 19 SQ.M.

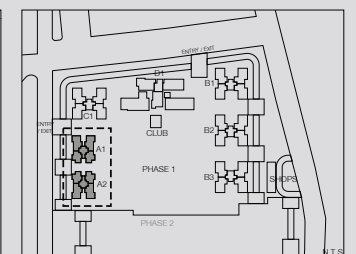
Total Area: 102 SQ.M.



TOWER A1 KEY PLAN



TOWER A2 KEY PLAN



SITE PLAN



This is not an offer, an invitation to offer and/or commitment of any nature. This contains artistic impressions and no warranty is expressly or impliedly given that the completed development will comply in any degree with such artist's impression as depicted. The furniture, accessories, paintings, items, electronic goods, additional fittings/fixtures, decorative items, false ceiling including finishing materials, specifications, shades, sizes and colour of the tiles, etc. shown in the image are only indicative in nature and are only for the purpose of illustrating/indicating a conceived layout and do not form part of the standard specifications/amenities/services to be provided in the unit. All specifications of the unit shall be as per the final agreement between the Parties.

The present project is being developed by Brick Rise Developers Pvt. Ltd. (A subsidiary of Lotus Greens Constructions Pvt. Ltd.) who has appointed Godrej Properties Limited as the Development Manager for the same. IndusInd Bank Ltd. has sanctioned the construction finance for the present Project. The RERA registration number for this project is: GODREJ NEST Phase 1 UPRERAPRJ13521 on website- <http://up-rera.in>

GODREJ NEST

SECTOR 150, NOIDA

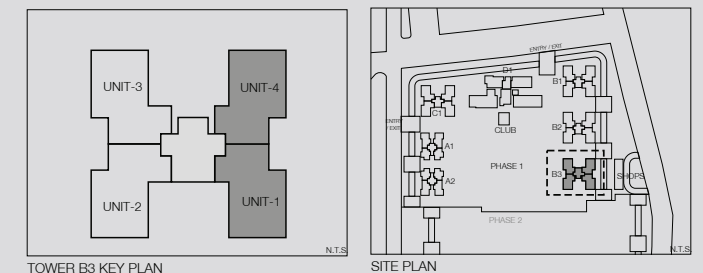
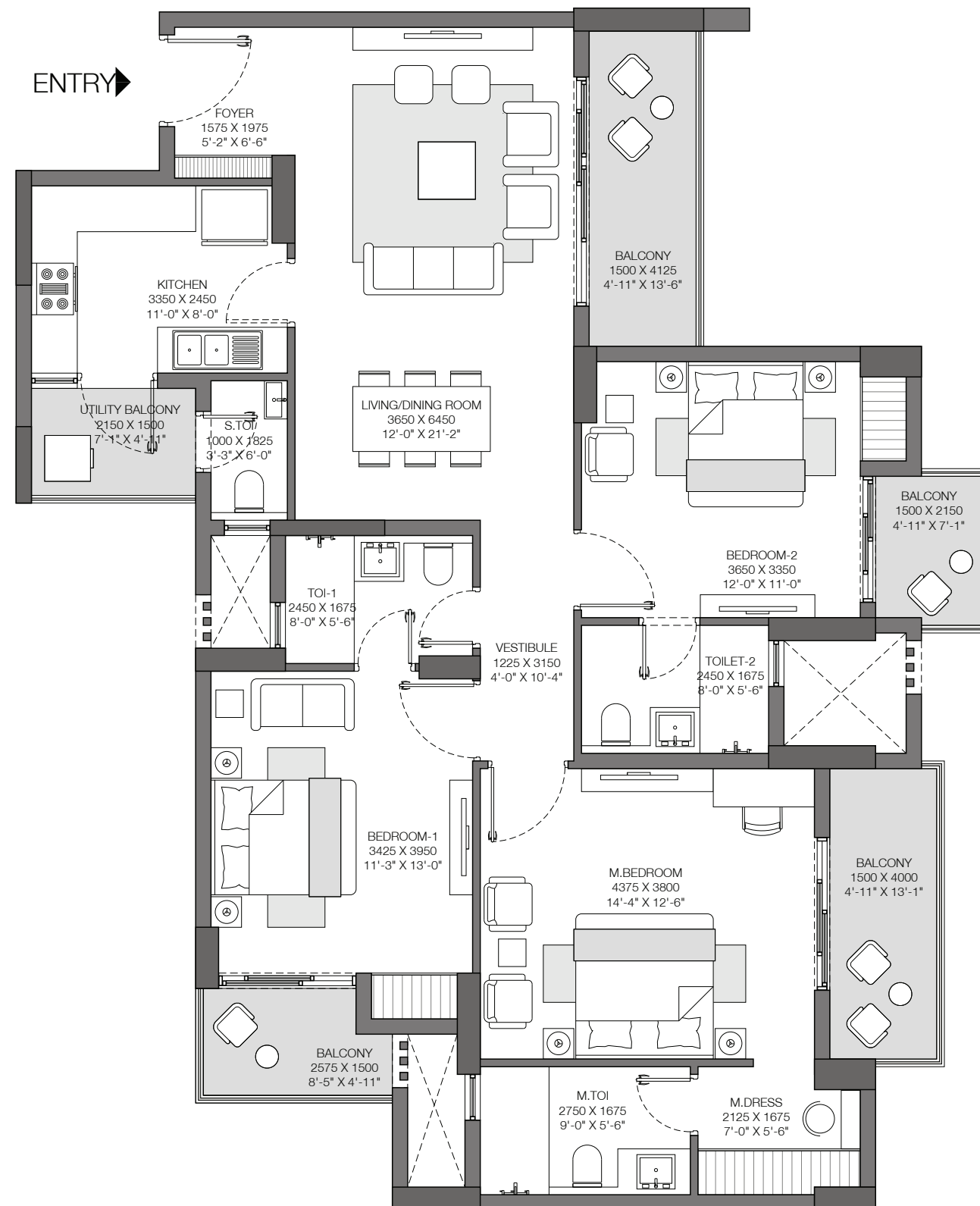
Tower B3: Unit 1 & 4

3 BHK + S. WC

Unit Carpet Area: 105 SQ.M.

Exclusive Area: 22 SQ.M.

Total Area: 127 SQ.M.



This is not an offer, an invitation to offer and/or commitment of any nature. This contains artistic impressions and no warranty is expressly or impliedly given that the completed development will comply in any degree with such artist's impression as depicted. The furniture, accessories, paintings, items, electronic goods, additional fittings/fixtures, decorative items, false ceiling including finishing materials, specifications, shades, sizes and colour of the tiles, etc. shown in the image are only indicative in nature and are only for the purpose of illustrating/indicating a conceived layout and do not form part of the standard specifications/amenities/services to be provided in the unit. All specifications of the unit shall be as per the final agreement between the Parties.

The present project is being developed by Brick Rise Developers Pvt. Ltd. (A subsidiary of Lotus Greens Constructions Pvt. Ltd.) who has appointed Godrej Properties Limited as the Development Manager for the same. IndusInd Bank Ltd. has sanctioned the construction finance for the present Project. The RERA registration number for this project is: GODREJ NEST Phase 1 UPRERAPRJ13521on website- <http://up-rera.in>

GODREJ NEST

SECTOR 150, NOIDA

Tower B3: Unit 2 & 3

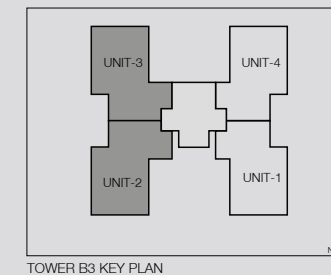
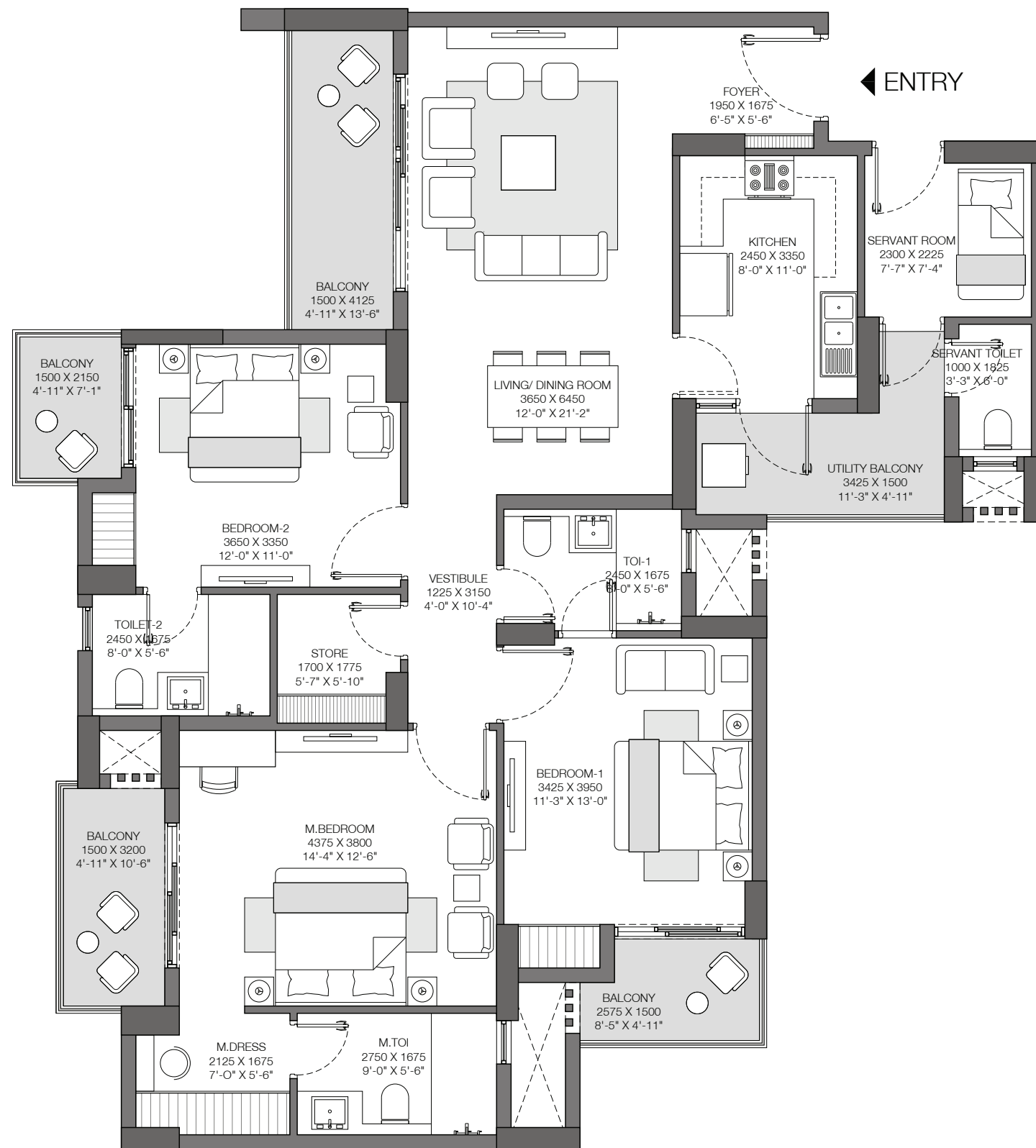
Tower C1: Unit 1, 2, 3 & 4

3 BHK + 2 STORE / UTILITY

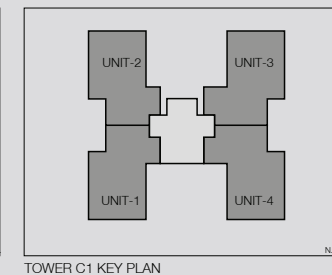
Unit Carpet Area: 114 SQ.M.

Exclusive Area: 24 SQ.M.

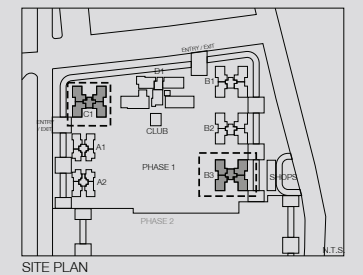
Total Area: 138 SQ.M.



TOWER B3 KEY PLAN



TOWER C1 KEY PLAN



SITE PLAN



This is not an offer, an invitation to offer and/or commitment of any nature. This contains artistic impressions and no warranty is expressly or impliedly given that the completed development will comply in any degree with such artist's impression as depicted. The furniture, accessories, paintings, items, electronic goods, additional fittings/fixtures, decorative items, false ceiling including finishing materials, specifications, shades, sizes and colour of the tiles, etc. shown in the image are only indicative in nature and are only for the purpose of illustrating/indicating a conceived layout and do not form part of the standard specifications/amenities/services to be provided in the unit. All specifications of the unit shall be as per the final agreement between the Parties.

The present project is being developed by Brick Rise Developers Pvt. Ltd. (A subsidiary of Lotus Greens Constructions Pvt. Ltd.) who has appointed Godrej Properties Limited as the Development Manager for the same. IndusInd Bank Ltd. has sanctioned the construction finance for the present Project. The RERA registration number for this project is: GODREJ NEST Phase 1 UPRERAPRJ13521on website- <http://up-rera.in>

GODREJ NEST

SECTOR 150, NOIDA

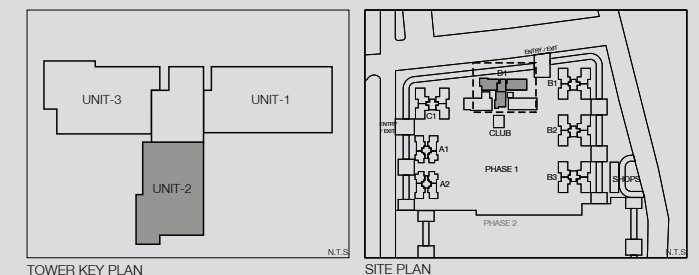
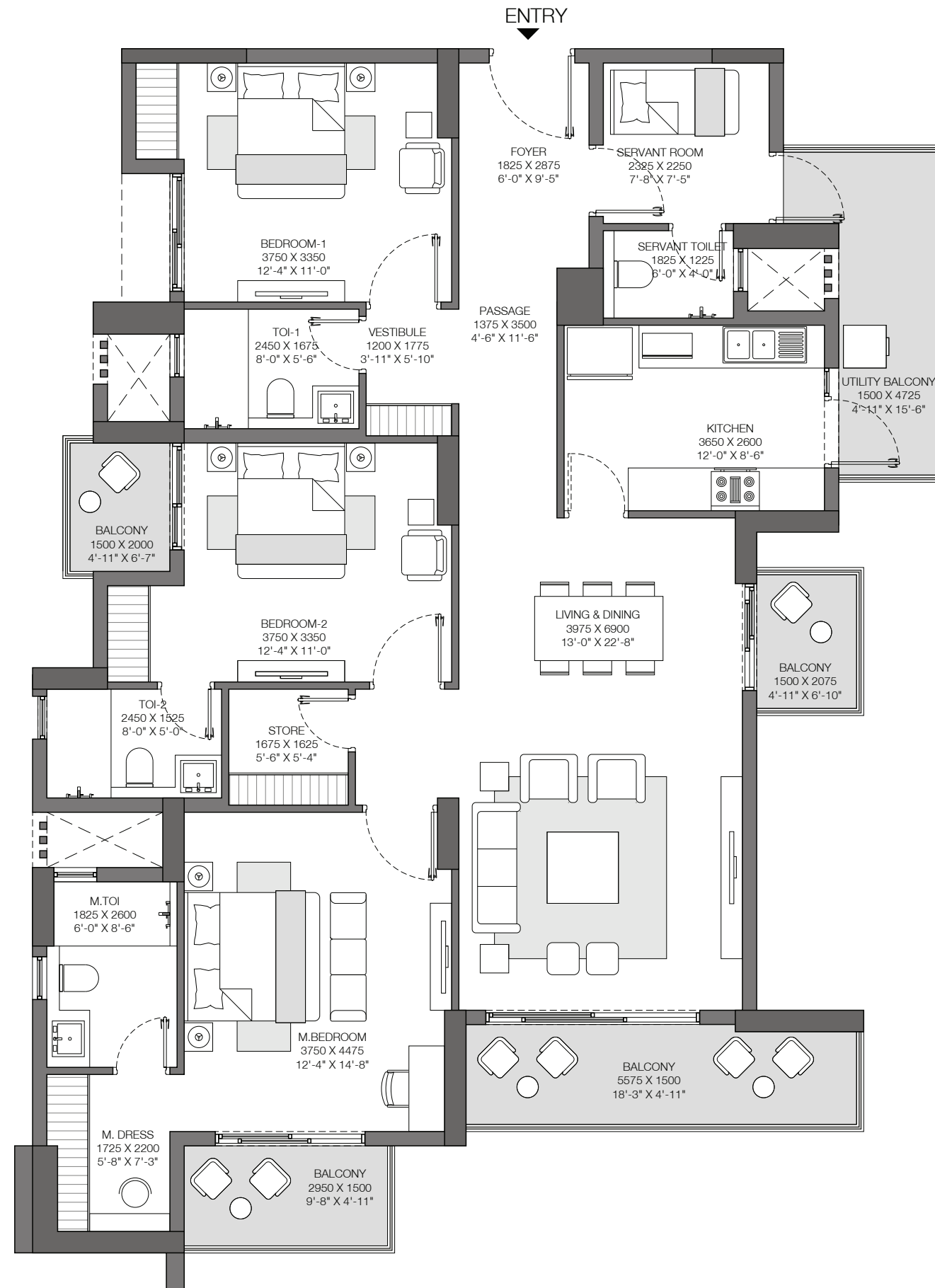
Tower D1: Unit 2

ICONIC TOWER- 3 BHK+2 STORE/UTILITY

Unit Carpet Area: 126 SQ.M.

Exclusive Area: 26 SQ.M.

Total Area: 152 SQ.M.



This is not an offer, an invitation to offer and/or commitment of any nature. This contains artistic impressions and no warranty is expressly or impliedly given that the completed development will comply in any degree with such artist's impression as depicted. The furniture, accessories, paintings, items, electronic goods, additional fittings/fixtures, decorative items, false ceiling including finishing materials, specifications, shades, sizes and colour of the tiles, etc. shown in the image are only indicative in nature and are only for the purpose of illustrating/indicating a conceived layout and do not form part of the standard specifications/amenities/services to be provided in the unit. All specifications of the unit shall be as per the final agreement between the Parties.

The present project is being developed by Brick Rise Developers Pvt. Ltd. (A subsidiary of Lotus Greens Constructions Pvt. Ltd.) who has appointed Godrej Properties Limited as the Development Manager for the same. IndusInd Bank Ltd. has sanctioned the construction finance for the present Project. The RERA registration number for this project is: GODREJ NEST Phase 1 UPRERAPRJ13521on website- <http://up-rera.in>

GODREJ NEST

SECTOR 150, NOIDA

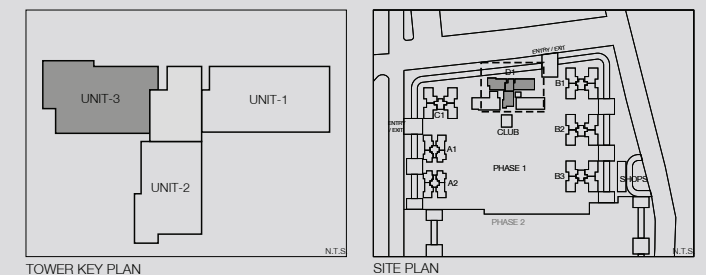
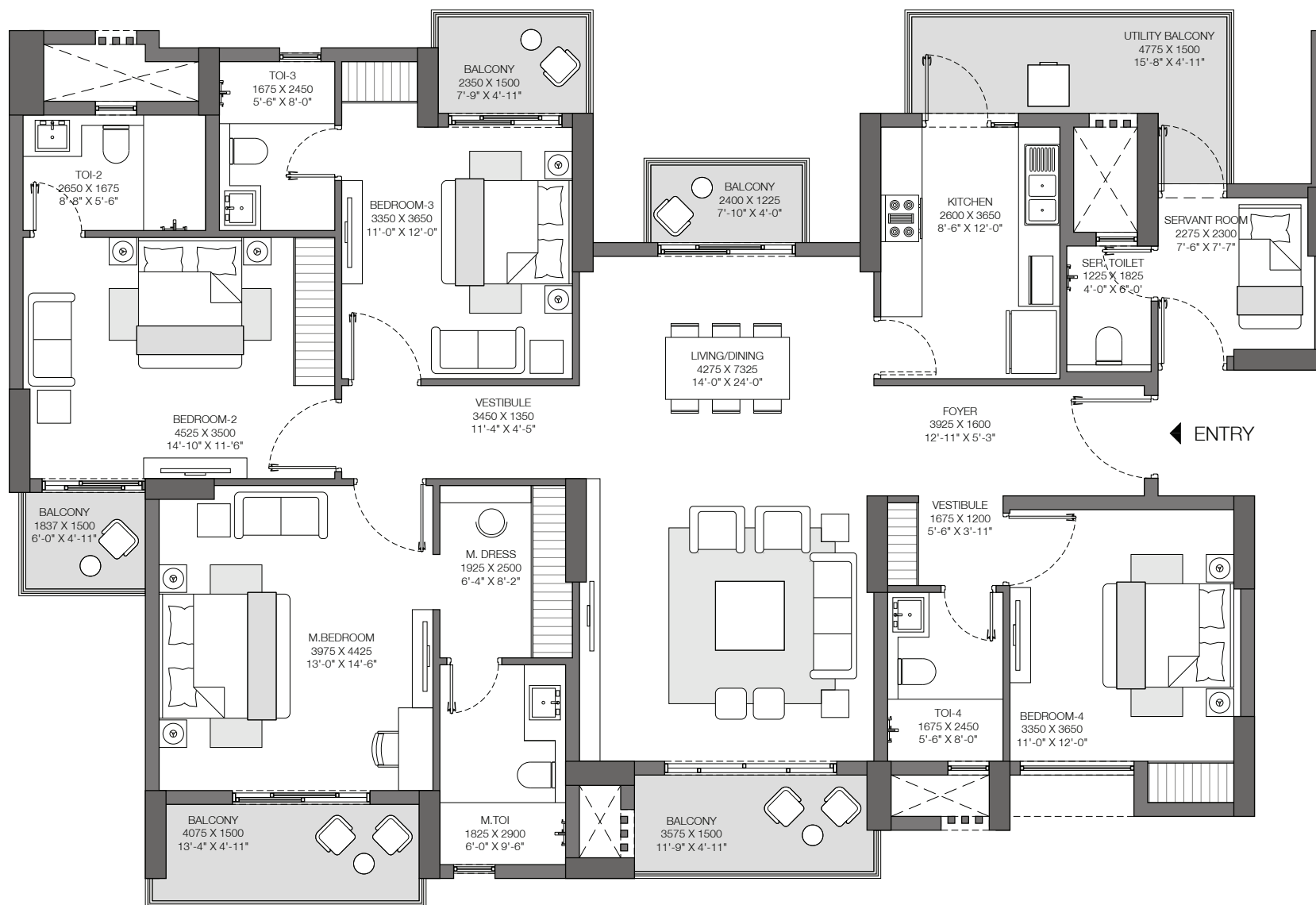
Tower D1: Unit 3

ICONIC TOWER- 4 BHK+UTILITY/STORE

Unit Carpet Area: 150 SQ.M.

Exclusive Area: 29 SQ.M.

Total Area: 179 SQ.M.

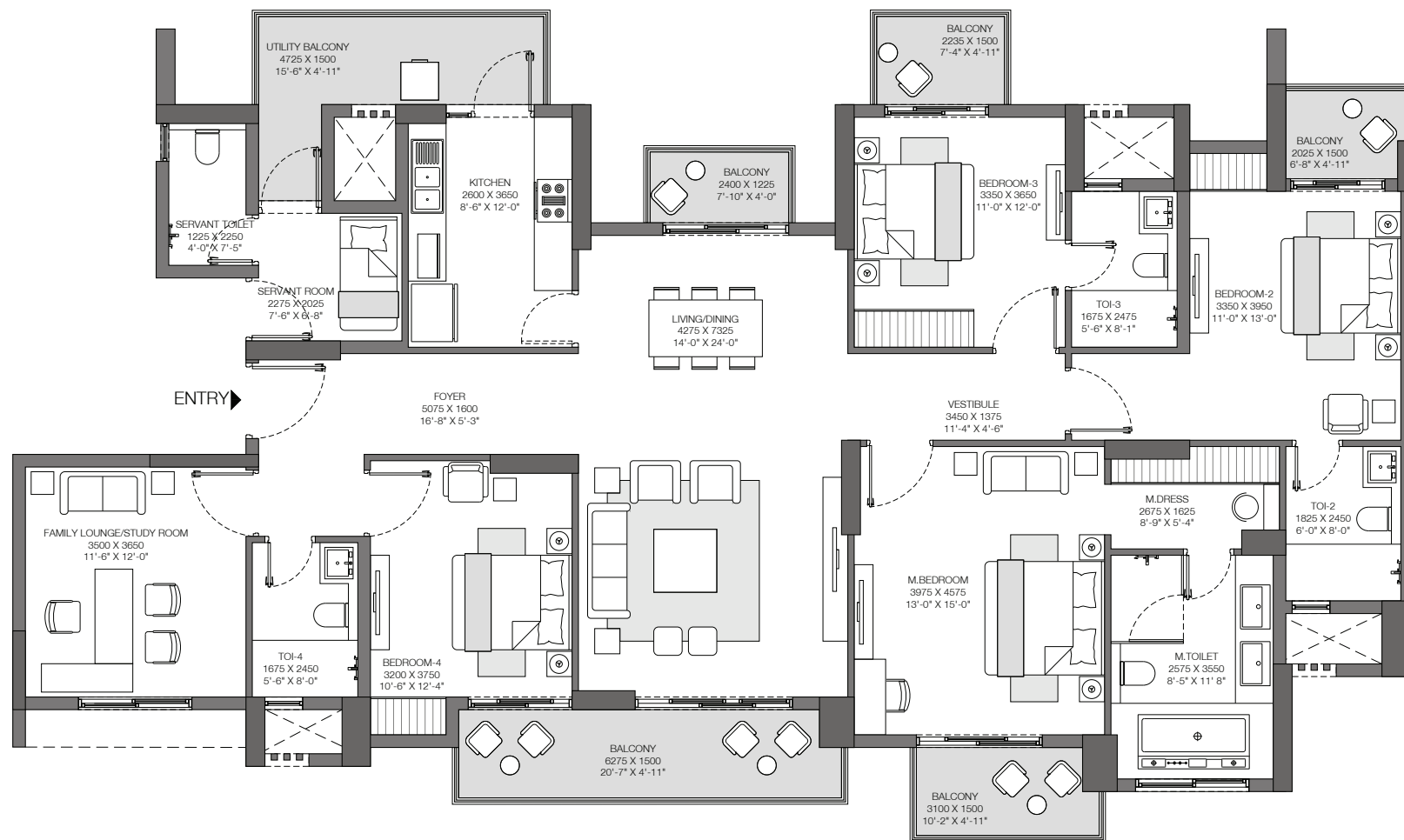


This is not an offer, an invitation to offer and/or commitment of any nature. This contains artistic impressions and no warranty is expressly or impliedly given that the completed development will comply in any degree with such artist's impression as depicted. The furniture, accessories, paintings, items, electronic goods, additional fittings/fixtures, decorative items, false ceiling including finishing materials, specifications, shades, sizes and colour of the tiles, etc. shown in the image are only indicative in nature and are only for the purpose of illustrating/indicating a conceived layout and do not form part of the standard specifications/amenities/services to be provided in the unit. All specifications of the unit shall be as per the final agreement between the Parties.

The present project is being developed by Brick Rise Developers Pvt. Ltd. (A subsidiary of Lotus Greens Constructions Pvt. Ltd.) who has appointed Godrej Properties Limited as the Development Manager for the same. IndusInd Bank Ltd. has sanctioned the construction finance for the present Project. The RERA registration number for this project is: GODREJ NEST Phase 1 UPRERAPRJ13521on website- <http://up-rera.in>

GODREJ NEST

SECTOR 150, NOIDA



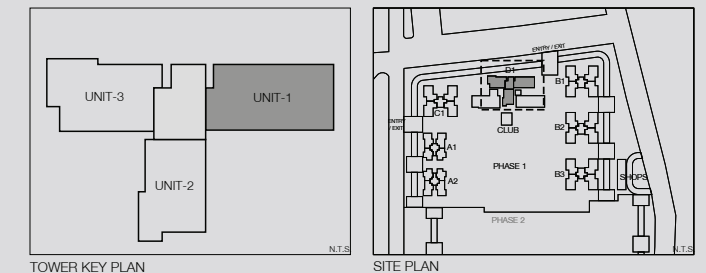
Tower D1: Unit 1

ICONIC TOWER - 4BHK+UTILITY/STORE +
FAMILY LOUNGE/STUDY

Unit Carpet Area: 169 SQ.M.

Exclusive Area: 32 SQ.M.

Total Area: 201 SQ.M.



This is not an offer, an invitation to offer and/or commitment of any nature. This contains artistic impressions and no warranty is expressly or impliedly given that the completed development will comply in any degree with such artist's impression as depicted. The furniture, accessories, paintings, items, electronic goods, additional fittings/fixtures, decorative items, false ceiling including finishing materials, specifications, shades, sizes and colour of the tiles, etc. shown in the image are only indicative in nature and are only for the purpose of illustrating/indicating a conceived layout and do not form part of the standard specifications/amenities/services to be provided in the unit. All specifications of the unit shall be as per the final agreement between the Parties.

The present project is being developed by Brick Rise Developers Pvt. Ltd. (A subsidiary of Lotus Greens Constructions Pvt. Ltd.) who has appointed Godrej Properties Limited as the Development Manager for the same. IndusInd Bank Ltd. has sanctioned the construction finance for the present Project. The RERA registration number for this project is: GODREJ NEST Phase 1 UPRERAPRJ13521 on website- <http://up-rera.in>